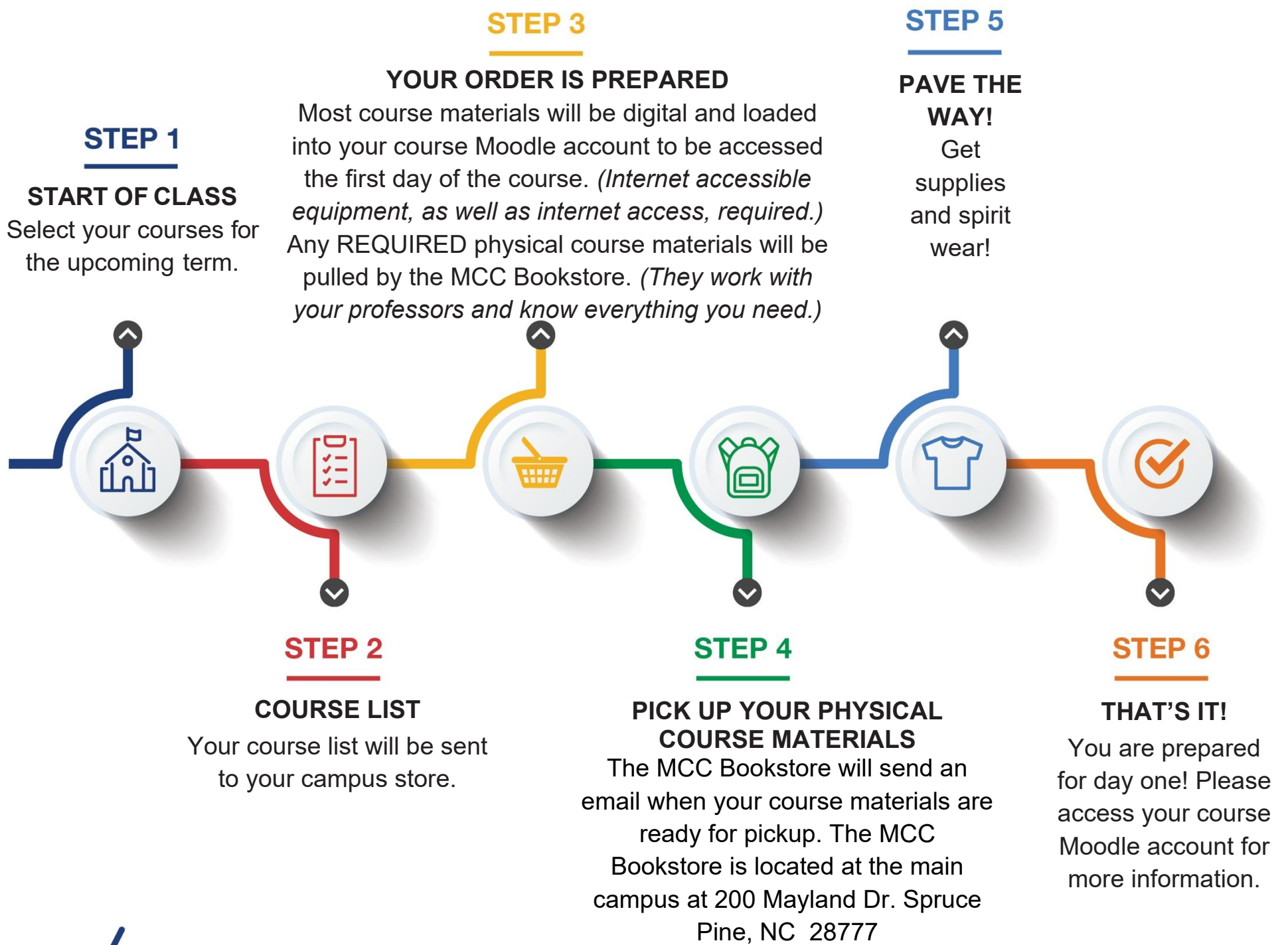


How Follett ACCESS Works



DID YOU DROP/ADD A CLASS? Head back to the campus store for assistance.

All adult curriculum students are automatically enrolled in the Follett ACCESS program. If you would like to **OPT-OUT** of the program, please do so at <https://includedcp.follett.com/> prior to the last day of the drop/add period for the course.

FAQs

How does Follett ACCESS work?

The Follett ACCESS takes the hassle out of course material buying because course material costs are covered as part of the tuition. This allows every enrolled student access to all required materials on day one. Once you have selected your courses, your course list will be sent to Mayland Community College Bookstore. The bookstore gets everything ready for you unless you decide to opt out of Follett Access.

Will I save money?

Yes! You will not pay out of pocket for your required course materials, as costs are covered in your tuition.

If my professor has recommended course materials, will those be included in the program?

Only materials identified by your professor or campus as "required" are included as part of the program. All "recommended" materials will be available for purchase at the bookstore and www.mayland.bkstr.com.

What are students saying about Follett ACCESS?

Students at other campuses who have participated in a similar program love the convenience and ease of accessing their course materials...and being ready for classes on day one!